

# Targhee Talk

*The Newsletter of the United States  
Targhee Sheep Association*



**May 2019**

### Inside this edition:

- 2019 National Show & Sale
- Starter Flock Update
- National Schedule
- Wool Standards
- NSIP Insights
- Targhee News
- Upcoming Calendar of Events

### See your sheep in print!

Targhee Talk Submissions for the June Edition are due May 26th.

Please send your great Targhee stories, pictures, and newsworthy items to [ustargheesheep@gmail.com](mailto:ustargheesheep@gmail.com)

or through the U.S. mail:

Targhee Talk  
PO Box 955  
Chinook, MT 59523

### Can't attend Nationals and the Annual Member's meeting?

But have a concern or suggestion to help make the Association run smoother, contact Mardy at 702-292-5715 or [ustargheesheep@gmail.com](mailto:ustargheesheep@gmail.com) to have it added to the meeting agenda.

Cover Photo Courtesy of  
Corrine Canen  
Glendive, Montana

## 2019 National Show & Sale - July 18-20th

The Wisconsin Junior Targhee Sheep Association is honored to be hosting the 2019 USTSA National Show & Sale. It will be held July 18th through July 20th at the Lodi Agricultural Fair Grounds, in Lodi, Wisconsin. Due to facility agreements, no arrivals before noon on Wednesday, July 17th will be allowed.

Entry Forms and the Entry Brochure Booklet are now available for download on the USTSA website ([www.ustargheesheep.org](http://www.ustargheesheep.org)). Please review the booklet as it details all of the information, rules, and testing details consignors will need for a successful show and sale. Entry forms are due to Mardy by May 31st. Event forms are still awaiting details to be finalized on the meals and will go out with the June Newsletter.

To receive copies of the Event and Entry Forms, along with the Entry Brochure booklet, through the U.S. mail, contact Mardy at 702-292-5715 or [ustargheesheep@gmail.com](mailto:ustargheesheep@gmail.com).

Exhibitors will be allowed to enter one ram with no ewe requirements. However, for each additional ram entry, TWO ewes must be entered. The sale committee reserves the right to limit numbers once entries are in to keep class sizes reasonable.

See schedule of events for list of all Open and Junior classes. Hosting Committee has chosen to break up age groups slightly different this year.

### Wool Show

Classes:

Ewe fleece 62 & finer  
Ram fleece 62 & finer

Ewe fleece 58 & 60  
Ram fleece 58 & 60

Wool entry is \$5 per fleece, with a two fleece limit per class. There is no need to tie your fleeces. Prepare the fleeces as normal, roll and place in clear plastic bags. Entries can be mailed if you are not able to attend the event but would like to enter the wool show. Arrangements can be made to send entries back.

### Junior Show Requirements

See Entry Brochure for full set of rules. Reminder that all sheep entered need to be registered in exhibitors name or that of a family member. This year juniors are also required to sign a Code of Conduct to be returned to Jesse Taylor at [taylor.jessie94@yahoo.com](mailto:taylor.jessie94@yahoo.com) prior to Nationals. Contact Mardy or Jesse if you didn't receive a copy in email.

## Deadlines to Remember for Nationals

**May 1** First day side microns can be taken  
**31** Entry and Event Forms are due

**June 1** Data run due for NSIP  
**10** Registrations and complete Catalog information due

**July 18-20** National Show & Sale

## Accommodations at Nationals

The headquarters hotel will be the Quality Inn & Suites, located at the Highway 60 exit of Interstate 39/90/94 (W9250 Prospect Drive, Lodi, WI 53555). A block of rooms have been reserved under the US Targhee Sheep Association for Wednesday night, July 17th through Friday night, July 19th. Single king rooms are \$90/night plus tax, double queen rooms are \$95/night plus tax, and single king suites are \$105/night plus tax. All rooms are non-smoking, and it is a pet-friendly hotel for an additional nightly charge. Please reference the US Targhee Sheep Association when making your reservations to obtain these rates, and contact them directly at 608-592-1450 to make your reservations. The block will be held through June 17th, and if a certain room type is not available, please contact Jeff Nevens at 608-576-9474 or [candjnevenslive-stock@frontier.com](mailto:candjnevenslive-stock@frontier.com) to check on availability.

Other lodging options are available at the Highway V exit at the interstate (next exit south towards Madison) – Comfort Inn, DeForest (608-846-9100), and Holiday Inn Express, DeForest (877-410-6667).

## 2019 USTSA Starter Flock Committee Report

When this edition of Targhee Talk comes out, the starter flock committee will already be evaluating applications for the 10-year anniversary awards of the program. Per the rules of the program, the committee will be selecting their top 5 choices by May 1st for submission to our first year judge, Burdell Johnson, for his final selections.

So far, we have received enough animal donations for one award for 2019. If you would like to make additional animal donations towards a second award, please let any committee member know. We have some great applicants that would be more than deserving of the award. Hunt Family Targhees has made another tremendous donation – another yearling ram for the program winner this year!! We cannot thank Mic enough for his continued generosity!!

There is also a need for monetary donations towards the buyers credit at the national sale. The 3 awards given in 2018 depleted almost all of the account; so if you know of anyone who is interested, please have them contact Mardy Rutledge or any member of the USTSA Starter Flock Committee.

The generosity of this association is second to none, and it's the reason that we're celebrating our second decade of giving. Thank you!!

~ Jeff & Leslie Nevens - USTSA Starter Flock Chairpersons

## President's Notes

Spring is here! I would like to introduce you to the newest addition to our flock, Samantha Sage Otis. She was born March 6th and came out at 8 lb and 21.5" long. She has been tagged as a keeper! Samantha is very excited for her first National Show & Sale in Lodi, WI and meeting everyone. A huge thank you goes out to everyone that is helping plan and put on this year's Nationals. I am sure it will be a great show.

I hope everyone had a good lambing season or will have one if you are like us and have just started lambing. We had to push it to April because of Samantha's arrival. It seems to be working out good. Our hearts go out to those who have battled the harsh winter and floods. This winter was a tough one for many.

Respectfully,  
Elisha Lewis Otis



## Schedule for 2019 USTSA National Show and Sale

**July 17th**

**Wednesday**

12 Noon

Pens Available For Early Arrivals  
Check-in for Junior, Open and Wool Shows Begin

**July 18th**

**Thursday**

8:00 AM

Check-in for Junior, Open and Wool Shows Continue

9:00 AM

**National Junior Show: Order of Showing.**

Yearling Ram (9/1/17 - 8/31/18)

Fall Ram Lamb (9/1/18 - 12/31/18)

Winter Ram Lamb (1/1/19 - 2/14/19)

Spring Ram Lamb (2/15/19 and younger)

Yearling Ewe (9/1/17 - 8/31/18)

Fall Ewe Lamb (9/1/18 - 12/31/18)

Winter Ewe Lamb (1/1/19 - 2/14/19)

Spring Ewe Lamb (2/15/19 and younger)

Best Fleece On Animal

**Junior Showmanship: Order of Showing**

Pee-Wee (7 years of age and under)

Junior (age 8 to 11 years)

Intermediate (age 12 to 15 years)

Senior (age 16 to 21 years)

**Junior/Senior Pairs Showmanship**

12 Noon

**Deadline For Sheep To Be In The Barn**

Open Show Health, Registration, Micron, And EBV  
Paperwork Due At This Time - FINAL CALL

Wool Show And Photo Contest Entries Due

1:00 PM

**Open Show Entry Sifting Begins**

2:00 PM

**Junior Wool Judging Contest/Education Begins**

3:30 PM

**Annual USJSTA Membership Meeting (Fair Grounds)**

6:00 PM

Picnic At Lodi Fair Grounds  
Entertainment At Lodi Fair Grounds

8:30 PM

USTSA Board of Directors Meeting

**SUBSCRIBE NOW TO**



**The Banner**  
Sheep Magazine

Promoting The Improvement of the Entire Sheep Industry

1 Year - \$25  
2 Years - \$45  
1 Year Canada or Mexico - \$60

P.O. Box 500 • Cuba, IL 61427  
(309) 789-5058 • Fax: (309) 789-5050  
ada.banner@sybertech.net  
www.bannersheepmagazine.com



## Schedule for 2019 USTSA National Show and Sale cont.

July 19th	Friday
9:00 AM	<b><u>Youth Futurity Show</u></b>
9:30 AM	<b><u>National Open Show: Order of Showing</u></b> NSIP Yearling Rams (9/1/17 - 8/31/18) Yearling Ram (9/1/17 - 8/31/18) Fall Ram Lamb (9/1/18 - 12/31/18) Winter Ram Lamb (1/1/19 - 2/14/19) Spring Ram Lamb (2/15/19 and younger) Champion Ram Selection  NSIP Yearling Ewes (9/1/17 - 8/31/18) Yearling Ewe (9/1/17 - 8/31/18) Fall Ewe Lamb (9/1/18 - 12/31/18) Winter Ewe Lamb (1/1/19 - 2/14/19) Spring Ewe Lamb (2/15/19 and younger) Champion Ewe Selection  Pair of Yearling Ewes (9/1/17 - 8/31/18) Pair of Fall Ewe Lambs (9/1/18 - 12/31/18) Pair of Winter/Spring Ewe Lambs (1/1/19 and younger) Champion Pen of Ewes Selection  Adult Jackpot Showmanship
10:00 AM	<b><u>Wool Show</u></b>
2:30 PM	<b><u>Annual USTSA Membership Meeting (Fair Grounds)</u></b>
7:00 PM	<b><u>USTSA Annual Banquet (Manke Event Barn)</u></b> Awards Presentation Benefit Auction
July 20th	Saturday
TBD	USTSA Board of Directors Meeting & Elections
11:45 AM	<b><u>Presentation of USTSA Starter Flock Awards</u></b>
12:00 PM	<b><u>USTSA National Sale: Order of Sale</u></b> Rams Ewes Pair of Ewes



**INVEST IN THE BEST**

**SHEEP EQUIPMENT MADE IN THE USA SINCE 1980**



**SYSTEM G (#989)**



**CALL OR EMAIL FOR A FREE CATALOG ON OVER 500 ITEMS**

**SYDELL INC.**  
 46935 SD HWY 50, BURBANK, SD 57010  
 PHONE: (605) 624-4538  
 TOLL FREE 1-800-842-1369  
 FAX: (605) 624-3233  
 WEBSITE: [www.sydell.com](http://www.sydell.com)  
 EMAIL: [sydell@sydell.com](mailto:sydell@sydell.com)

Free Advertising Space for Targhee Events

Do you have a Targhee event you would like to see promoted? Please contact the USTSA office ([ustargheesheep@gmail.com](mailto:ustargheesheep@gmail.com)) to list your event for FREE!



## Wool Standards

In the Targhee breed 40% is graded on the fleece and 60% is graded on the body confirmation. So, in checking for belly wool you start higher on the side parting the wool until you can see where it changes. It will become shorter than your staple length wool and not as desirable. Every sheep will have some belly wool but you want the minimum as you can possibly have for economic reasons. The belly wool will not be as dense and you may find a coarser fiber hair in it.

If they are freshly shorn at Nationals, we cannot tell staple length wool from belly wool, leaving questions in the sifting committee's minds. Do they have too much belly wool, is the owner trying to hide a defect? We cannot tell. So, I would like to ask, that you help us out with this problem by leaving some length to your belly and sides, thus making the sifting committee's job less questionable. In this breed we need to have some length to the wool in order to be able to accept or sift the animal. The Targhee sheep is considered a half blood, meaning 60's and 62's. Also accepted are 58's and 64's. 56 and coarser is unacceptable. Coarser and finer wool can be produced on other breeds, so this creates a narrow window for the Targhee breed.

Two years ago there seemed to be a big problem with too much belly wool at the show. Last year seemed to be better, other than too closely sheared belly's and sides creating questions in the minds of the sifting committee. My hope is that this article will be received well and not become a controversial issue. The bottom line is that the Targhee breed is a wool sheep. But, the wool is very important and we need to treat it as such. I have included a letter written by Will Griggs, Manager, Utah Wool Marketing Association. He addresses the discussion of belly wool. I would like to thank Will for his expertise in the wool business and his willingness to share this information. My hope is that we can all come together with a better understanding of this belly wool issue.

Thank you.  
Bryan Allred

### Utah Wool Marketing Association

55 S. IRON STREET SUITE 2  
TOOELE, UT 84074  
TELEPHONE (435) 843-4284 FAX (435) 843-4286  
E-MAIL: utahwoolmarketing@gmail.com

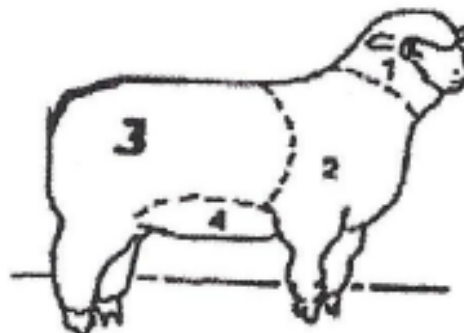
While there are several different sections of a fleece on a sheep, cheek, top knot, neck, shoulders, body, britch, belly and tags and pieces. This discussion is aimed at focusing on belly wool.

The belly wool is the lower, belly section of the fleece on the sheep. It is typically shorter than most of the wool and, since it comes in contact with the ground mostly is dirtier or heavier than the other wool excluding the tags. Furthermore, since the belly wool comes in contact with the ground, there is more occasion for there to be contaminants in this wool. Contaminants can be anything from mud, vegetable matter (VM) to the worse contaminant known to wool, polypropylene. Polypropylene (Poly) is better known as baling twine. This "fiber" can intertwine with wool fiber and remain in the wool through processing. Furthermore, because of the static properties of wool, the Poly can be easier held in wool.

Once Poly contaminated wool enters the processing stage, it has a lot of properties that let it behave as wool through the entire process. The twine gets opened up into smaller fibers further helping it go through processing. It then ends up in the fabric itself. Since Poly is a larger fiber than wool, it weaves in the fabric. These voided areas must then be cut out of the long flowing bolts of fabric rendering the bolt less valuable.

When identifying belly wool on the sheep, it is sometimes possible to see the different line between the body of the sheep and where the belly wool starts. This occurs more easily in finer wool sheep, however, the best way to identify the belly line is to part the wool starting halfway from the backbone on the side of the sheep and working downward until a difference in length and crimp becomes obvious. In terms of wool production, it is best that there be as little belly wool as possible.

#### VARIATIONS OF DIFFERENT BODY AREAS IN WOOL DENSITY



## Wool Standards, cont

In terms of selection of breeding animals care should be taken to identify and use animals with a lower belly line.

When the animal is sheared, the shearer will remove the belly wool first and cast it aside to be picked up by the wool handler and placed in a bin solely for belly wool. On occasion, the belly wool will be handled separately when marketing. For warehouses, the belly wool will be combined with belly wool from other customers to make large lots for reducing handling and marketing charges. It will be weighed and cored to get the necessary data for marketing. Note that finer belly wool comes from fine sheep and sometimes is kept in separate lots depending on the price situation.

Belly wool prices have been quite erratic over the past several years. We have seen prices as low as \$.50-\$.60 per pound to \$1.30-\$1.40 per pound. Mostly finer belly wool will receive the higher prices. The large, medium grade lots we handle will usually fall between 24 and 25.5 micron. The small, finer lots will be 22.0-23.0 micron.

Belly wool use, while somewhat private, has been used in cheap wool blends the help further cheapen prices of manufacturing lots. It has been used to make felted fabrics, gloves, socks, and mostly products that use woolen rather than worsted systems (short wool vs staple wool).

I hope you find this information useful. If you need any further assistance, please give me a call.

Best Regards,  
Will Griggs  
Manager  
Utah Wool Marketing Association.

## ALB Highlights Internship Opportunities in the Sheep Industry

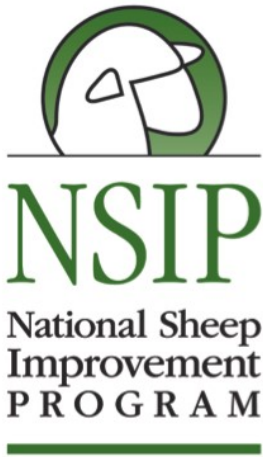
The American Lamb Board believes that education and understanding all sectors of the sheep industry is of the utmost importance for young producers and industry professionals, and that having passionate, hard-working and progressive individuals across all facets is important for growth in the American sheep industry to provide the highest quality American lamb.

Such individuals might want to consider applying for upcoming summer or fall internships with the following companies in the industry.

Harper Feeders is offering an internship this fall. Harper Feeders is a sheep and cattle feedlot located in Eaton, Colo. It is a family-owned business that started in 1977 with a small sheep lot that has expanded through the years. In 2006, a small cattle lot was added to diversify the operation. The fall season is the busiest time of year for the sheep industry in terms of the feeding sector. More than 90 percent of their inventory is brought in between September and October. This will be a full-time commitment, but can be flexible with online classes. Individuals will be asked to help with daily operations at the feedlot including livestock handling of sheep and cattle, vaccinating, sorting, movements, feed and water management, and pen maintenance. Assigned tasks will vary depending on the day. This internship offers hourly pay and housing potential. For more details or to apply, send your resume and cover letter to harperfeeders@gmail.com with the subject line Harper Feeders Internship Application.

Mountain States Rosen is one of the two largest lamb plants in the nation and is a co-op owned company that is dedicated to providing quality American lamb. The co-op has members stretching across the United States, from California to Ohio and from Montana to Texas. This internship will give students the chance to learn how production processes across the country differ and the effects they have in the end. Co-op leaders are excited at the prospect of bringing in new and young talent to develop with the company and have several openings this summer for internships in the following areas: harvest/fabrication, quality assurance, marketing, analytic meat science, and procurement. Interns will be assigned a specific project that will be due the last week of their internship. They will then have the opportunity to present their findings to a board of Mountain States management. Please send resume and cover letter to Frances Potter.

Superior Farms is an employee-owned company and offers paid internships to students enrolled in a college or university. The company has filled its 12 internship positions for this summer. However, it does have openings throughout the year at its locations in California and Colorado. Interns with Superior Farms have the opportunity to get hands-on experience in the areas of sales and marketing, information technology, livestock, customer service, accounting, robotics, quality assurance, human resources and meat science. College credits are available when requirements are met. Interested individuals should email Shaylynn Beam.



America's  
GENETIC FOUNDATION  
FOR A PROFITABLE



**NSIP Insights with Dr. Lisa Surber (Targhee Breed Representative on the NSIP BOD)**

Are you in the middle of lambing or are your lambs almost weaned or fully weaned? In some parts of the west, cold and snow and then flooding have been a challenge for lambing while some have green grass growing like crazy. Our Targhee producers are a diverse bunch.

I attended the ASI Convention in New Orleans, LA this past January. It was a well-attended meeting. The National Sheep Improvement Program hosted an open forum. During that forum, Dr. Ron Lewis, our Technical Advisor, shared some interesting data regarding the Targhee breed and its use of the US Range Index.

Figure 1 shows the progress that the USRI has made in a ten year period. The USRI was developed to improve profitability in extensively managed Western flocks. As I have mentioned before, 2012 was really a turning point for the use of USRI and it continues to be a useful tool for purebred and commercial producers alike.

It is even more interesting when you dissect the USRI apart and examine the change in the traits used to calculate the index.

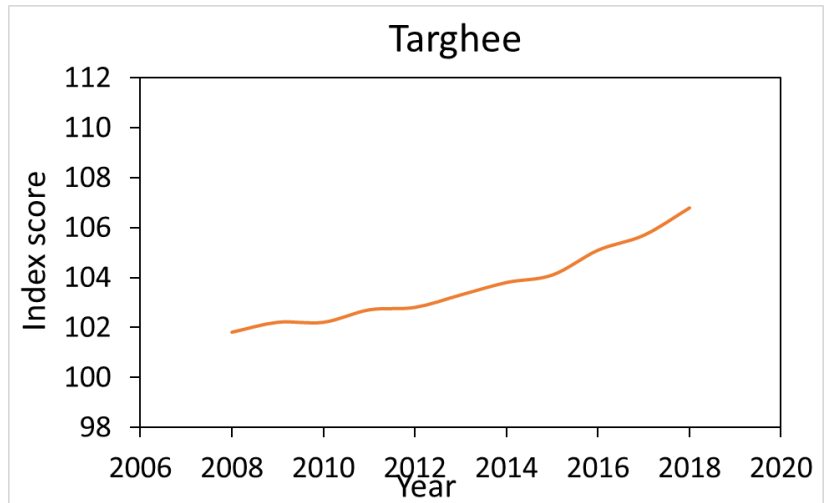


Figure 1. US Range Index from 2008-2018.

Criteria (EBV)	Weighting in index	Gain over 10 years
Post-weaning weight	Positive	2.2 lb
Maternal weaning weight	Positive	1.5 lb
Yearling weight	Negative	3.7 lb
Yearling grease fleece weight	Positive	6.4 %
Yearling fiber diameter	Negative	- 0.2 micron
Yearling staple length	Neutral	3.3 mm
Number lambs born	Positive	0.107

Table 1. Ten year change of EBV components of the USRI



## NSIP Insight, continued

Did the USRI do what it was designed to do? Absolutely!

One of the concerns that was expressed at the meeting is the number of NSIP records submitted within the Targhee breed has dropped substantially. Historically, the Targhee breed has been an example of progressive purebred breeders embracing genetic technology. Coincidence, maybe, but if this is a real trend it is concerning as the demand for NSIP records by commercial ram purchasers at US ram sales is increasing.

New and old members, don't forget that NSIP has a YouTube channel. There are many helpful tutorials from setup of Pedigree Master to Exporting Data to Excel. Make sure you subscribe to the channel and get notifications when new material is added.

As a reminder, NSIP launched an online searchable database over a year ago. You can access the tool at <http://nsipsearch.nsip.org>. Have you used it yet? I know some producers spend a lot of time re-searching and like this feature very much. You can search by 16 digit ID number or indicate the search parameters you are looking for. Once you run a query, you can click on "view details" and find tons of information on each animal and trace an animal's pedigree. It has replaced some of our reports such as the young and proven sires/dam reports.

Please let me know how I can help. Warm Regards, Lisa

## Update from past Starter Flock Winner Corrine Canen

Last summer, after I won my starter flock I put the ewes in a portable pen and moved it around our neighbors' lot for the rest of the summer. We moved them back to our place to get them bred after my county fair. I showed them all at the fairs and they did very well even though the judge didn't judge them as wool breed sheep.

It is really hilarious that no one else in my family can recognize each ewe as anything more than a Targhee sheep; but, I know their names and who donated them!

This winter I really dove into learning lots about wool. I toured the Montana Wool Lab and a wool mill. I did online research which I used for a school science fair project about the fire resistance of wool. I gave an illustrated talk at our County 4-H Contest Day about the history of wool in clothing and its fire resistance and won the junior contest. I went to a sheep symposium where they basically covered everything about raising and marketing sheep of all breeds.

I was fortunate to be able to see two of my four ewes lamb. Now, we have four white lambs running with our black face lambs! I am still trying to sell my fleeces and I'm hoping to buy more ewes this year. I really like the different personalities of my ewes, the experience of this year with them, and the income potential.



## 2019 USTSA Annual Members Meeting

The Annual Members meeting will be held Friday, July 19th at 2:30 pm at the Lodi Fairgrounds. Jeff Nevens and Leroy Pedersen's terms expire this year. The Board will be taking nominations up until the Members meeting for the At Large East and Central Plains seats as well as finding out if Jeff or Leroy wish to seek reelection. Voting will commence at the meeting.

If you have any other concerns or suggestions to help make the Association run smoother, contact Mardy at 702-292-5715 or [ustargheesheep@gmail.com](mailto:ustargheesheep@gmail.com) or your region's Board Member to have it added to the meeting agenda.

## Sheep for Profit School July 10-13, 2019

Mark your calendar and plan to attend the 2019 Pipestone Lamb and Wool Sheep for Profit School, which will be held on July 10th through 13th in Pipestone. This will be the 10th course offering with 173 past participants from 23 different states and Canada completing the course.

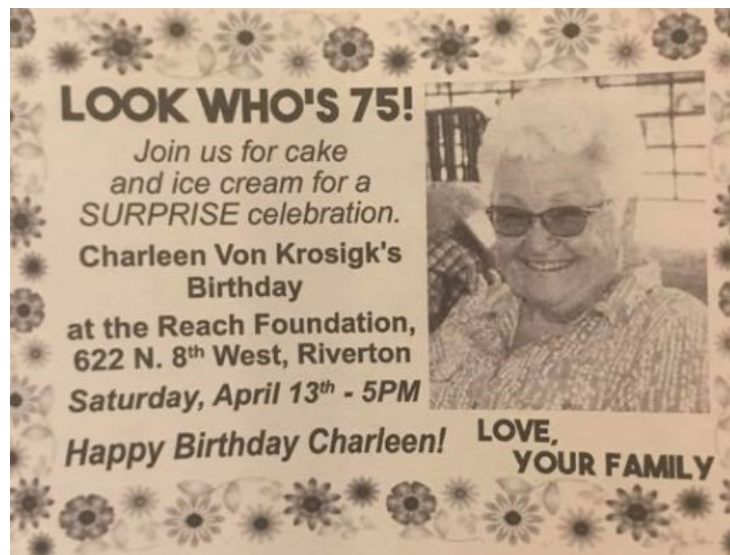
The Sheep for Profit School is a professional management and business school for the sheep industry. The purpose of the school is to help you improve your sheep management skills; increase the profitability of your sheep operation and form relationships in your business. The school will be intense and combine lecture, group discussion and visits to outstanding Pipestone area sheep operations. Expert instructors with diverse and practical sheep experience will help you define your vision and build a practical plan to achieve your goals. This three-day investment will change your sheep operation and your view of the sheep industry.

Enrollment in the school is limited to create an ideal learning environment and allow for one-on-one advising. Visit our website [www.pipestonesheep.com](http://www.pipestonesheep.com) for registration information and a course schedule. For more information, contact the Pipestone Lamb and Wool Management Program, Minnesota West Community and Technical College, PO Box 250, Pipestone, MN 56164, 800-658-2330 or e-mail: [Angela.Houselog@mnwest.edu](mailto:Angela.Houselog@mnwest.edu).



### All American Junior Show

The USTSA is again sponsoring Targhees for the 26th anniversary All American Junior Show. Visit [www.allamericanjuniorshow.com](http://www.allamericanjuniorshow.com) for details and registration forms. The juniors that attended last year were very happy with the experience and great to share Targhees with other junior sheep exhibitors.



And in case you missed the birthday, one of USTSA's favorite members celebrated in style this year!!

## Upcoming Calendar of Events

- May 4-5** - 46th Annual Maryland Sheep and Wool Festival - West Friendship, Md. - [www.sheepandwool.org](http://www.sheepandwool.org)
- May 11-12** - New Hampshire Sheep and Wool Festival - Deerfield (N.H.) Fairgrounds - [www.nhswga.org](http://www.nhswga.org)
- May 25** - Finnsheep Breeders Association Annual Meeting - Best Western in Wooster, Ohio - [www.finnsheep.org](http://www.finnsheep.org)
- May 25-26** - Great Lakes Fiber Show - Wooster, Ohio - [www.greatlakesfibershow.com](http://www.greatlakesfibershow.com)
- May TBD** - Wool Handling and Shearing Management - in Auburn, Calif. - <http://ucanr.edu/woolhandling&shearingmanagement>
- May 30 - June 1** - Colorado Shearing School - Brush, Colo. - Marlin Eisenach at [marlin.eisenach@colostate.edu](mailto:marlin.eisenach@colostate.edu) or 970-542-3543
- June 1** - 69th Annual West Virginia Sheep & Goat Sale - Petersburg, W.V. - [www.wvsheepandgoatsale.com](http://www.wvsheepandgoatsale.com)
- June 1-2** - Flag Wool and Fiber Festival - Flagstaff, Ariz. - [www.flagwool.com](http://www.flagwool.com)
- June 6-9** - Estes Park Wool Market - Estes Park, Colo. - [www.epwoolmarket.com](http://www.epwoolmarket.com)
- June 15** - NSIP Program Meeting and Tour - Rochester, Ind. - [executive@indianasheep.com](mailto:executive@indianasheep.com) or call 317-896-2213
- June 30** - Sierra Foothills Wool Pool - Auburn, Calif. - <http://ucanr.edu/sfwoolpool>
- July 7-10** - NLFA Howard Wyman Sheep Industry Leadership School - Harrisburg, Penn. - <http://www.nlfa-sheep.org/leadership.html>
- Aug. 2-3** - Bartlettyarns Annual Open House - Harmony, Maine - [www.bartlettyarns.com](http://www.bartlettyarns.com)
- Aug. 22-24** - California Wool Growers Association Annual Meeting & Convention - Minden, Nev. - [www.californiawoolgrowers.org](http://www.californiawoolgrowers.org)
- Sept. 6-8** - Wisconsin Sheep & Wool Festival - Jefferson, Wis. - <http://www.wisconsinssheepandwoolfestival.com>

## Board of Directors

### President

#### Montana:

Elisha Lewis Otis  
342 Svenson Road  
Reed Point, MT 59069  
406-861-0082  
realmtcow-girl@hotmail.com,  
Term expires: 2020

### Vice President

#### Central Plains:

Leroy Pedersen  
42929 SD Hwy 46  
Lesterville, SD 57040  
605-660-2981  
leroy@koletzkyimplement.com  
Term expires: 2019

### Directors

#### At Large West:

Julie Ward  
PO Box 762  
Sheridan, MT 59749  
406-596-0668  
clovermeadowsmt@gmail.com  
Term expires: 2021

#### West:


Bryan Allred  
PO Box 116  
Fountain Green, UT 81632  
ballred@cut.net  
435-445-3528  
Term expires: 2021

#### East:

Todd Taylor  
W4857 Meek Rd  
Arlington, WI 53911  
608-332-4914  
toddtaylor@wisc.edu  
Term expires: 2020

#### At-Large-East:

Jeff Nevens  
N 1225 Hillestad Road  
Lodi, WI 53555  
608-592-7842  
AandJNevensLive-stock@frontier.com  
Term expires: 2019



**Roswell Wool**

"Dedicated to a Tradition of Integrity"

- Largest group of wool buyers in the U.S.A.
- Competitive bidding
- Producer owner and operated

1-800-624-WOOL (9665)  
[www.roswellwool.com](http://www.roswellwool.com)



**Targhee Talk**  
 PO Box 955  
 Chinook, MT 59523

# Ask Me About ...

## sheep!

**SUBSCRIBE TODAY!**

Online at [CountrySideNetwork.com](http://CountrySideNetwork.com) or call 970-392-4419

\$24.99/Year or 2 Years, just \$39.00



**The Voice of the Independent Flockmaster**

Magazine contains informative articles on health, feed and grazing, predator protection and marketing meat and wool products.

**Spotlight your stock for \$40/year  
 Set up a Breeders Listing Today!**

For greater promotional exposure consider a display ad for your flock. We will be happy to help you design an eye-catching ad. Call or email Sue @ [slapcewich@country sidenetwork.com](mailto:slapcewich@country sidenetwork.com) 970-373-7301

## Subscribe!



### THE SHEPHERD

*a guide for sheep and farm life*

12 month subscription - \$30 USD  
 online at:

[www.theshepherdmagazine.com](http://www.theshepherdmagazine.com)

or mail check to:

The Shepherd

PO Box 168 | Farson | WY 82932

Name: \_\_\_\_\_  
 Address: \_\_\_\_\_  
 City: \_\_\_\_\_ State: \_\_\_\_\_ Zip: \_\_\_\_\_

- Breeding & Reproduction • Nutrition
- Animal Husbandry • Management
- Disease & Parasites • Pasture Management
- Marketing • Feeding Strategies • Wool
- Research & Development
- Lambing/Kidding Cooking • Guardian Animals
- Breed Profiles • Industry Resources